



# Integration of health services in Europe: Future Challenges

## Integració de serveis de salut a Europa: Reptes de futur



World Health  
Organization

REGIONAL OFFICE FOR

Europe



Organisation  
mondiale de la Santé

BUREAU REGIONAL DE L'

Europe



Weltgesundheitsorganisation

REGIONALBÜRO FÜR

Europa



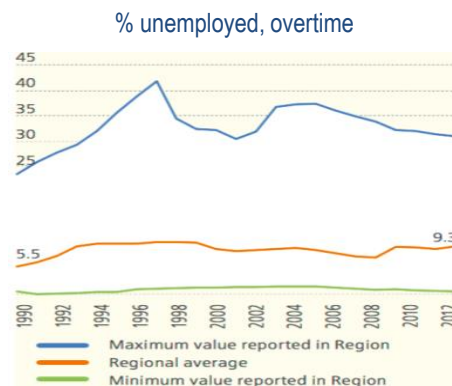
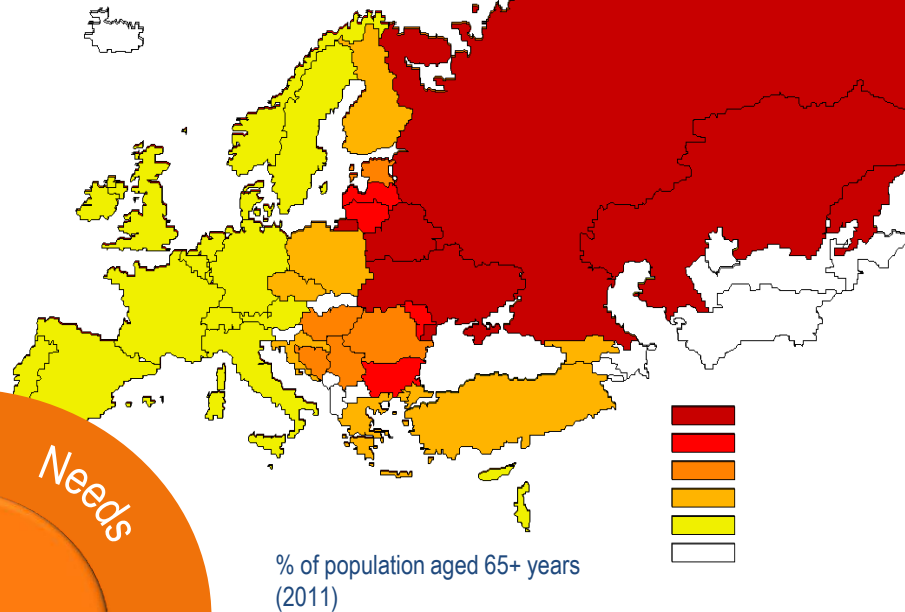
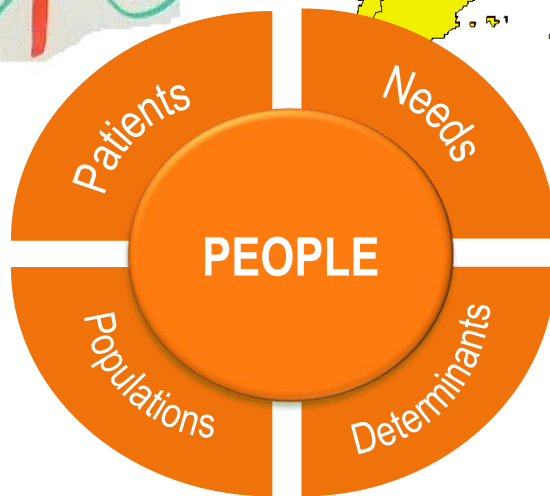
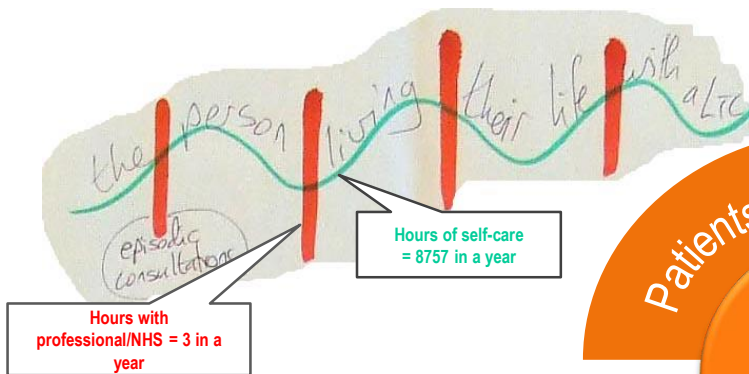
Всемирная организация  
здравоохранения

Европейское региональное бюро

Juan Tello

WHO European Centre on Primary Health Care  
Health Services Delivery Programme  
Division of Health Systems and Public Health

# Drivers of integration



1 in 3  
11-year-olds is

overweight  
or  
obese

# QUICK FACTS



**27%**

of the population  
is expected to  
be 65 years &  
older in 2050<sup>1</sup>



**2:1**

working age to  
elderly persons in  
2060 (4:1; 2013)<sup>2</sup>



**2-4%**

of GDP in 2050  
expected for  
long-term care;  
increase of 1%  
from present<sup>3</sup>



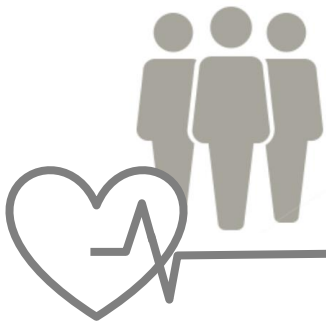
**80%**

of the chronic,  
NCD disease  
burden is largely  
preventable<sup>4</sup>



**73%**

average % of  
preventable  
hospitalizations  
for hypertension<sup>5</sup>



# Evolution of the model of care



**De-institutionalized**  
E.g. mental health



**People-centred**  
E.g. life course



**Closer to home**  
E.g. long term care



**Multiple settings**  
E.g. rehabilitation



**Multi providers**  
E.g. new competencies



**Virtual**  
E.g. telecare

# Response of services

Stages	Conventional care	Disease-oriented care	Coordinated services	Integrated services
Model of care	Selective primary care	Disease management	Care management	Whole-person
Organization of providers	Vertical	Linkages	Horizontal	Collaborative
Management of services	Management of production	Management of resources	Management for performance	Management for outcomes
Continuous improvement	Quality of inputs	Quality of outputs	Quality of processes	Quality of outcomes

# Integrated care principles are a timeless approach

1996

Reforming health care based on people-centred; outcome focused, oriented towards PHC



1978

Vision and key principles for PHC: intersectoral; participation; etc

2008

System focused; services reform, policy reforms, UHC, leadership

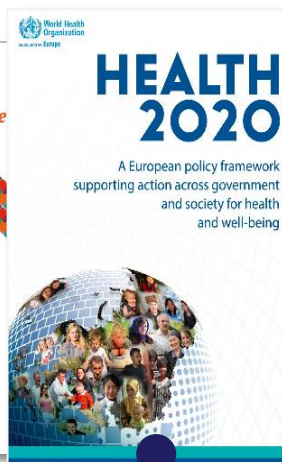


2001

Position paper of the WHO European Office for integrated health services

2015

Transforming health services delivery as priority for people-centred health systems



2012

People centred health systems; emphasis on public health; integration

2016

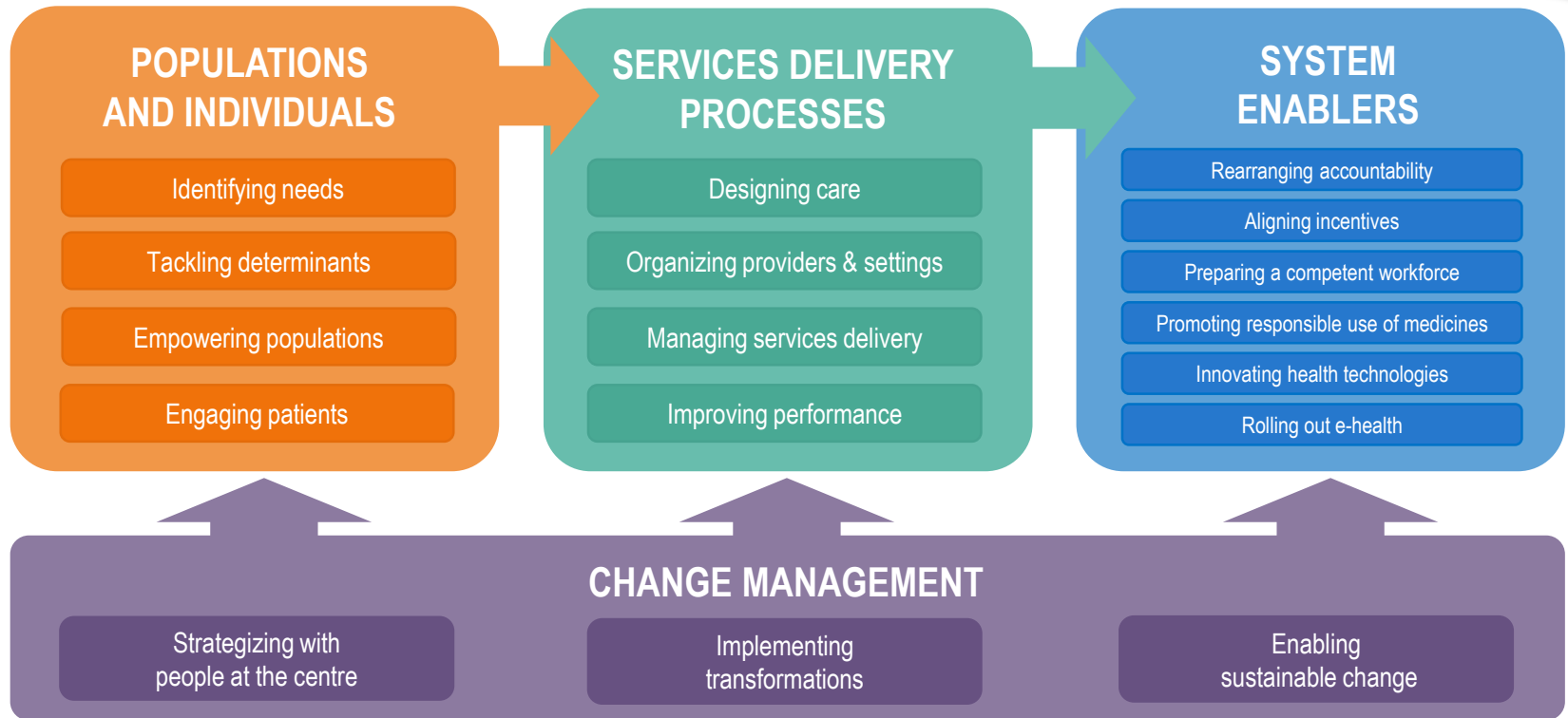
European Framework for Action on Integrated Health Services Delivery



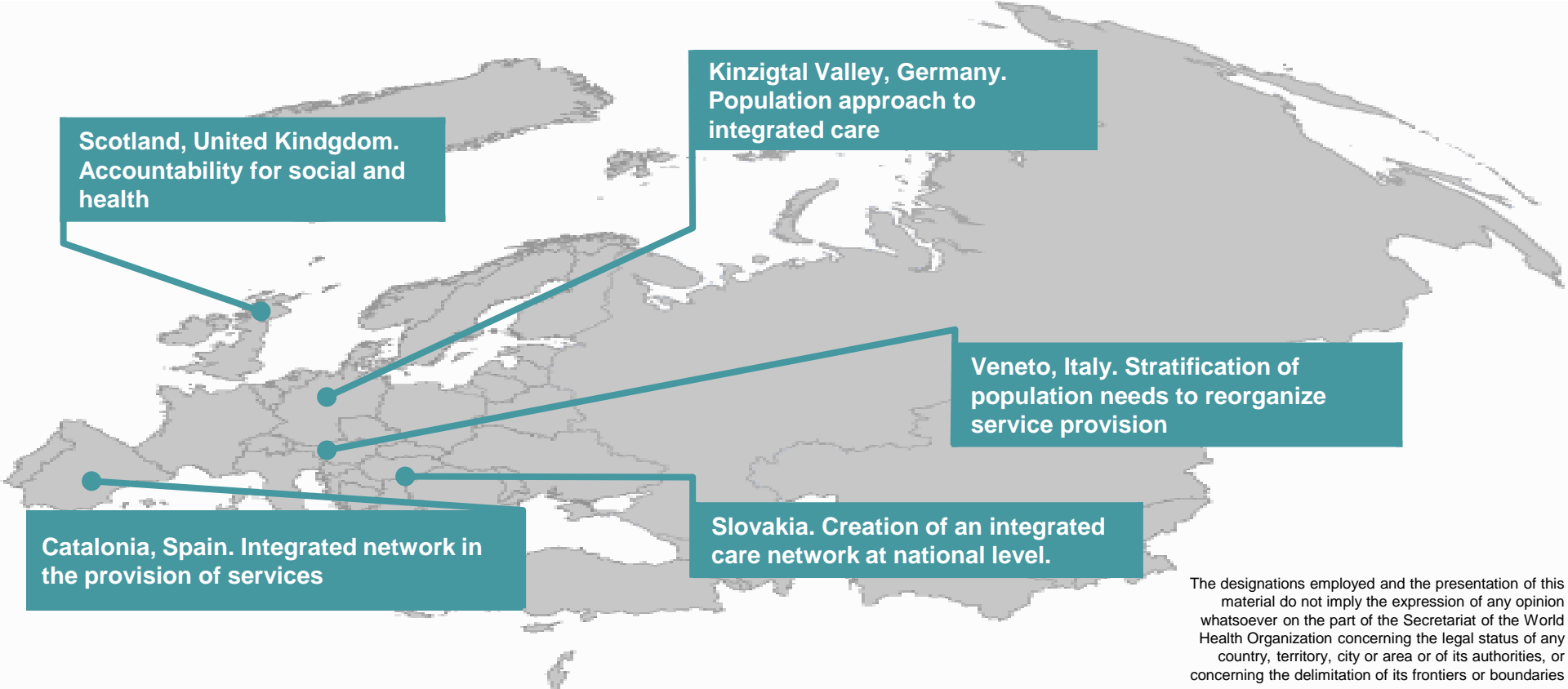
Strong PHC and integrated health services delivery focused on needs put forward as key to achieving goals



# The European Framework for Action on Integrated Health Services Delivery



# Integrated care: evidence from the WHO European Region



Scotland, United Kingdom.  
Accountability for social and health

Kinzigtal Valley, Germany.  
Population approach to integrated care

Veneto, Italy. Stratification of population needs to reorganize service provision

Catalonia, Spain. Integrated network in the provision of services

Slovakia. Creation of an integrated care network at national level.

The designations employed and the presentation of this material do not imply the expression of any opinion whatsoever on the part of the Secretariat of the World Health Organization concerning the legal status of any country, territory, city or area or of its authorities, or concerning the delimitation of its frontiers or boundaries



# Generating new evidence: key considerations for research



Evolution of ethical standards with new forms of data



Targeting findings to input policy process



Unlocking the potential of data (big data; social media; etc.)



Prioritizing operational, practice-oriented research



Accelerate new forms of measurement to anticipate needs



Accept complexity  
research is messy!

# Integrated care in the WHO European Region: priority streams for research



**Policy questions:**  
accountability, financing

Focus on population health  
including SDH, environment



**Policy questions:** NCDs, TB,  
palliative care

Focus across levels of care,  
pathways, transitions



**Policy questions:** chronicity, multi-  
morbidity, ageing, mental health

Focus on LTC, home care, telecare;  
community care

# WHO Barcelona Office for Health Systems Strengthening



- Established in 1999
- Supported by the Government of the Autonomous Community of Catalonia, Spain
- Focuses on health systems and financing: analytical work and capacity building
- Staff work directly with Member States across the European Region
- Part of the Division of Health Systems & Public Health of the WHO Regional Office for Europe



**World Health  
Organization**

REGIONAL OFFICE FOR

**Europe**



**Organisation  
mondiale de la Santé**

BUREAU RÉGIONAL DE L'

**Europe**



**Weltgesundheitsorganisation**

REGIONALBÜRO FÜR

**Europa**



**Всемирная организация  
здравоохранения**

**Европейское** региональное бюро

Contact us:

Sant Pau Art Nouveau Site

Nostra Senyora de La Mercè pavilion

Sant Antoni Maria Claret 167

08025 Barcelona, Spain

Email: [eubar@who.int](mailto:eubar@who.int)

Website: [www.euro.who.int/barcelona](http://www.euro.who.int/barcelona)

# Technical focus on health systems and financing for universal health coverage

